

**CINTASA**

**BELT CONVEYOR**

**TUL**



# BELT CONVEYOR TUL

Its utilisation combines the robust of its structure and the easy manageability by its frame dimensions, facilitating its adaptation to any disposition.

Frame composed by laminated UPN profiles and angles, which are assembled and welded longitudinally and transversally, forming a horizontal frame.

Intermediate frames are manufacture in modular series, with the intention to facilitate both transport and assembly on site. Thus like its adaptability to each required length.

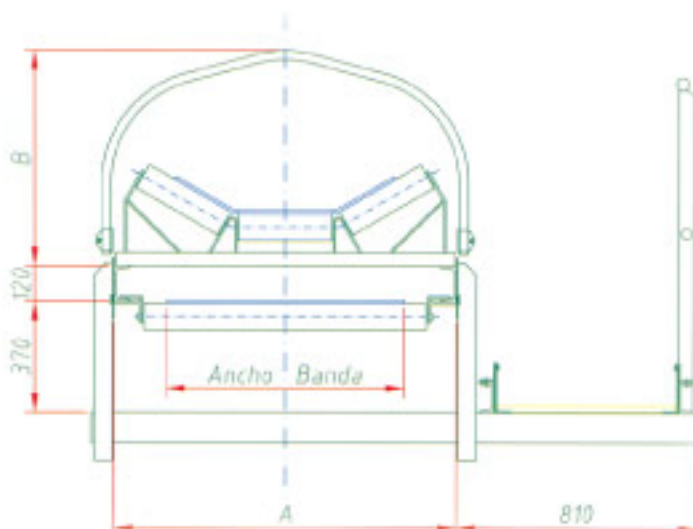
Over this frame are clamped the idler stations, allowing in easy way, modifying its distribution and position for the correct aligned of the belt.

Thanks to its resistance and its reduced dimensions of frame, this conveyor is used like belt feeder; tripper in combination with other of our conveyors; mobile and/or reversible conveyor in silo feedings; manual selection for recycling plants; etc.

Standard belts of 500, 650, 800, 1000, 1200 and 1400 mm wide, studying for special projects 1600 mm wide belts.

Maximum transport capacity, depending diferent densities, up to 1200 ton/h.

Mining, Quarries, Mineral Extraction, Wood, Rubber, Paper and Chemical Industries, Metallurgy, Recycling and Energy Production are the sectors where this conveyor is most demanded.



BELT WIDTH	DIMENSIONS	
	A	B
500	800	595
650	950	660
800	1150	720
1000	1350	750
1200	1600	780



**CINTASA**



Drive head



Intermediate frame



Tail head



**CINTASA**

**EQUIPMENT  
TUL**



# ACCESSORIES

## TUL

### Skirt boards

They avoid the spilling of the product.



### Covering

It protects the product from the atmospheric conditions.

### Walkway

With access stairs. It allows to do the cleaning and maintenance of the equipment with safety and convenience.



### Stockpile System

Includes an extensible conveyor over the main conveyor. It obtains a volume increase of stocked product.



### Lower mesh / Decking plate

Takes the possible loses of product, avoiding their falling down to the ground.



### Chute of unloading

It is essential when the unloading of the product must be done at one exact point.



### Equipment with turn system

Only one conveyor and many unloading zones.



# INSTALLATIONS TUL





**CINTASA**



